

FACE | HOW-TO

all about eyes

YOUR COMPLETE BACK-TO-BASICS GUIDE

Turn back the clock, fake a good night's sleep or make your stare sparkle with these tricks of the trade



take care

Protect and perfect in three easy steps

1. FIRM: Twice daily, apply a light lotion packed with active ingredients to help treat lines and add lift. Using your ring finger, gently pat it on while following the bone of the eye socket. Try **Skin Doctors Cosmeceuticals Eyetuck Anti-Bag Technology** (2), \$54.95, or **Dr. LeWinn's Private Formula**

Line Smoothing Complex SB Eye Recovery Complex (3), \$69.95.
2. SMOOTH: After a late night or long flight, models and make-up artists swear by using chilled spoons to treat puffiness. Rest them over closed eyes for a few minutes to soothe and revive. Alternatively, try an eye

cream with a rollerball applicator, such as **Garnier Nutritionist Caffeine Eye Roll-on** (5), \$17.75. The metal tip promises to stimulate microcirculation and help drain away excess fluid.
3. BRIGHTEN: For an even tone, blend a concealer that's one to two shades paler than your skin underneath your

eyes to visually refresh and lighten the area. Choose a sheer, light-reflecting formula that blends easily without caking. We like **Covergirl & Olay Simply Ageless Eye Concealer** (1), \$17.95, and **Bourjois Bio Detox Organic Anti-Puffiness Concealer** (4), \$26. ▶

TODD BARRY; EDWARD URRUTIA



fake it

Add fullness to your flutter with false lashes. For a soft, natural effect, add a few individual lashes to the outer corners of your eyes, or, for high drama, choose a full set.

HOW-TO: After applying your eye make-up (including mascara), smooth on a thin, even layer of eyelash adhesive to the base of the false lashes

and let it dry for 30 seconds, or until it has become sticky. Next, hold a mirror below your chin and look down into the reflection so your eyelid is fully extended. Affix the lashes on top of your natural lash line, using the tip of your tweezers to secure. Leave to dry for a few seconds before opening your eyes.



FACE | HOW-TO

enhance your eyes

Overwhelmed by the rainbow of shades of the cosmetics counter? Never fear. Choosing the right hue is easy if you narrow down the choices to two groups that will suit you: complementary and contrasting colours. Set your eyes sparkling with shades in the same tone as your iris, or make them really "pop" with hues that are the exact opposite.



blue eyes

COMPLEMENT: Look for variations of blue, like turquoise and navy. Try: Revlon Matte Eye Shadow in Riviera Blue (1), \$19.95, and Bourjois Khôl & Contour Eye Pencil in Bleu Graphique (4), \$16.
CONTRAST: Orange-based hues, such as apricot, peach, and bronze, are best for you. Try: Maybelline New York Eye Studio Baked Duo Eye Shadow in Bronze Blowout (7), \$13.95, and Max Factor Earth Spirits Eyeshadow in Inca Bronze (10), \$12.95.

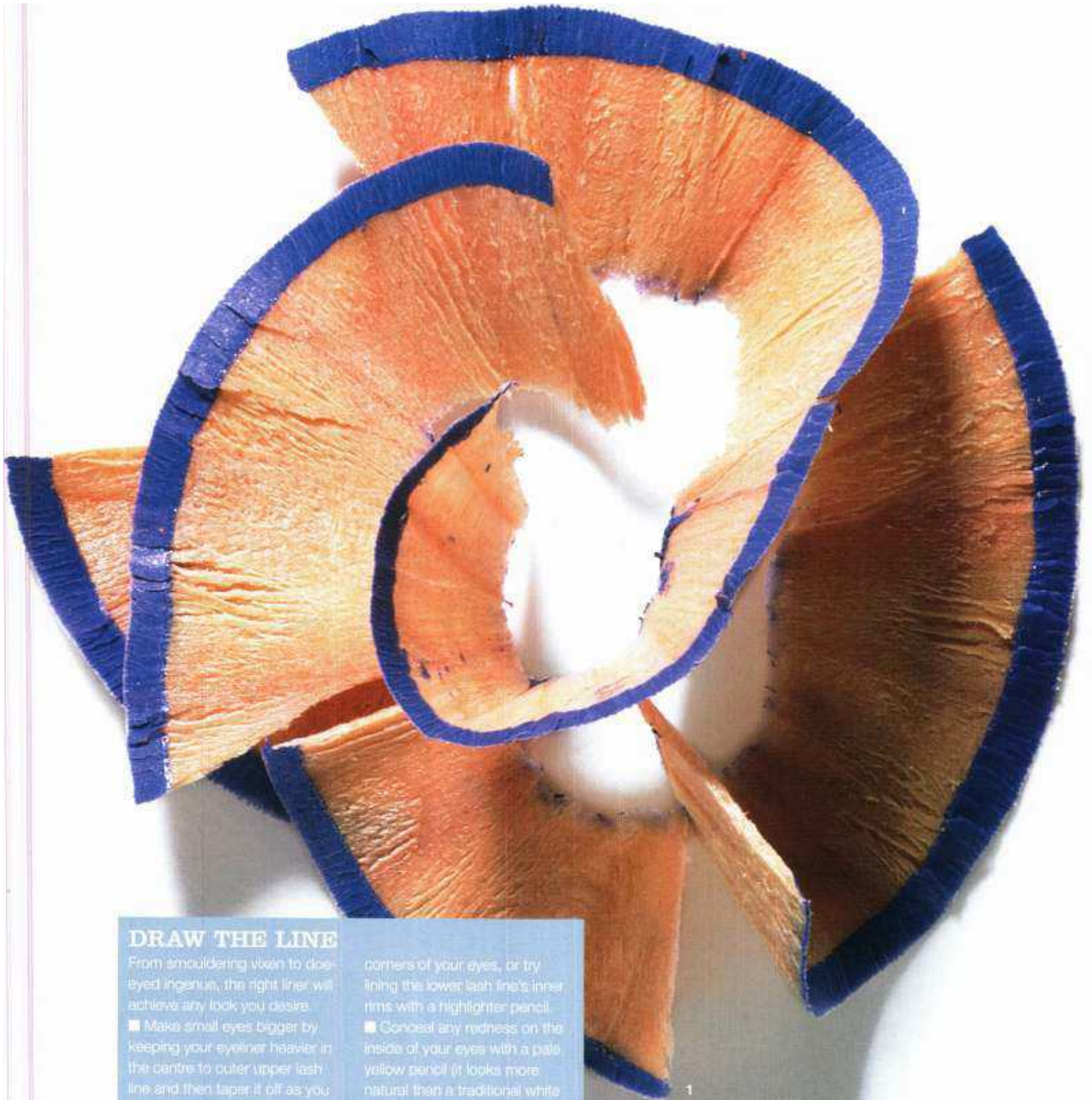
green/hazel eyes

COMPLEMENT: Opt for shades of green, olive and khaki. Try: Maybelline New York Eye Studio Baked Duo Eye Shadow in Ivy Icon (2), \$13.95, and L'Oréal Paris Color Appeal Chrome Shine in Silvery Green (5), \$18.45.
CONTRAST: Experiment with purple tones, such as lilac. Try: Rimmel Colour Mousse Eye Shadow in Galaxy (8), \$13.95, and Savvy Luxury Eyeliner in Pearl Plum (11), \$7.95.

brown eyes

COMPLEMENT: From milky to dark, you'll love chocolate tones. Try: Rimmel Colour Rush Mono Eye Shadow in Smokey Quartz (3), \$10.50, and Revlon Luxurious Color Satin Eye Shadow in Shimmering Sienna (6), \$19.95.
CONTRAST: For added drama, opt for blue-based shades, like indigo and teal. Try: Face of Australia Eye Definer in Marine (9), \$7.45, and Bourjois Eyeshadow in Turquoise (12), \$20.

marie claire top tip: If you're looking a little tired, avoid dark or red-based eyeshadow and eyeliner shades and instead use soft, earth-toned colours for a refreshed appearance.



DRAW THE LINE

From smouldering vixen to doe-eyed ingenue, the right liner will achieve any look you desire.

- Make small eyes bigger by keeping your eyeliner heavier in the centre to outer upper lash line and then taper it off as you reach the inner corners.
- Add intensity by lining your lids, not once but twice for extra drama. To make lashes look fuller, apply a dark liner right into the roots, making sure there's no gap in between.
- Make them sparkle by applying a light-coloured shimmering powder to the inner

corners of your eyes, or try lining the lower lash line's inner rims with a highlighter pencil.

- Conceal any redness on the inside of your eyes with a pale yellow pencil (it looks more natural than a traditional white pencil). Try: Revlon Matte Luxurious Color Kohl Eyeliner in Very Violet (1), \$23.95; Rimmel Soft Kohl Kajal Eye Liner Pencil in Royal Blue (2), \$8.50; Bourjois Kohl & Contour Eye Pencil in Bleu Surprenant (3), \$16; Prestige Soft Blend Kohl Eyeliner in Indigo (4), \$14.95. ▶

TIM ROBINSON; EDWARD URRUTIA





FACE | HOW-TO



marie claire top tip: Tinting your lashes and brows is a great way to add definition without daily touch-ups. Do it yourself with 1000 Hour Eyelash & Brow Dye Kit, \$18.95.

shape up

Eyebrows lift and frame your eyes and give your face structure. Here's how to achieve the perfect shape for you

GET THE RIGHT ARCH:

To determine your ideal brow, you'll need to consider the shape of your face—is it oval, square, round or long? Oval and long faces should try a shape that has just a slight arch towards the outer edge, as high arches can make the face look even longer. Round faces should opt for a traditional arch that is just on the outside of the line of your pupil, while square (or angular) faces should keep their brows very soft, with only a hint of an arch to soften the face.

SELECT YOUR SIZE:

Be guided by an imaginary diagonal line drawn from the corner of your nose continuing past the outer corner of your eye—this is where your brow should stop. The inner portion

of the brow shouldn't go beyond the edge of the nostril directly below it. Also, consider the size of your face to keep things in proportion: larger faces can wear a heavier brow, while smaller shapes should opt for a finer finish.

START PLUCKING:

Working along the line of your arch and not upwards into the shape of your brow, remove hairs, one at a time. Constantly step back from the mirror to check the shape. Try **Elite Design Straight Tweezers (5)**, \$6.95. If possible, it's best not to tweeze on top of the brow, but if you need to, go gently.

FILL IN THE BLANKS:

Apply short, feathery strokes in a light-coloured pencil, such as **Australis Eyebrow**

Pencil in Dark Brown (1 & 2), \$7.95, to areas that are bare or thinning. For a softer look, choose a matt powder one or two shades darker than your natural hair colour. Brush it upwards into the hair using an angled brush. Try **Max Factor Earth Spirits Eyeshadow in Burnt Bark (3)**, \$12.95.

ADD DEFINITION:

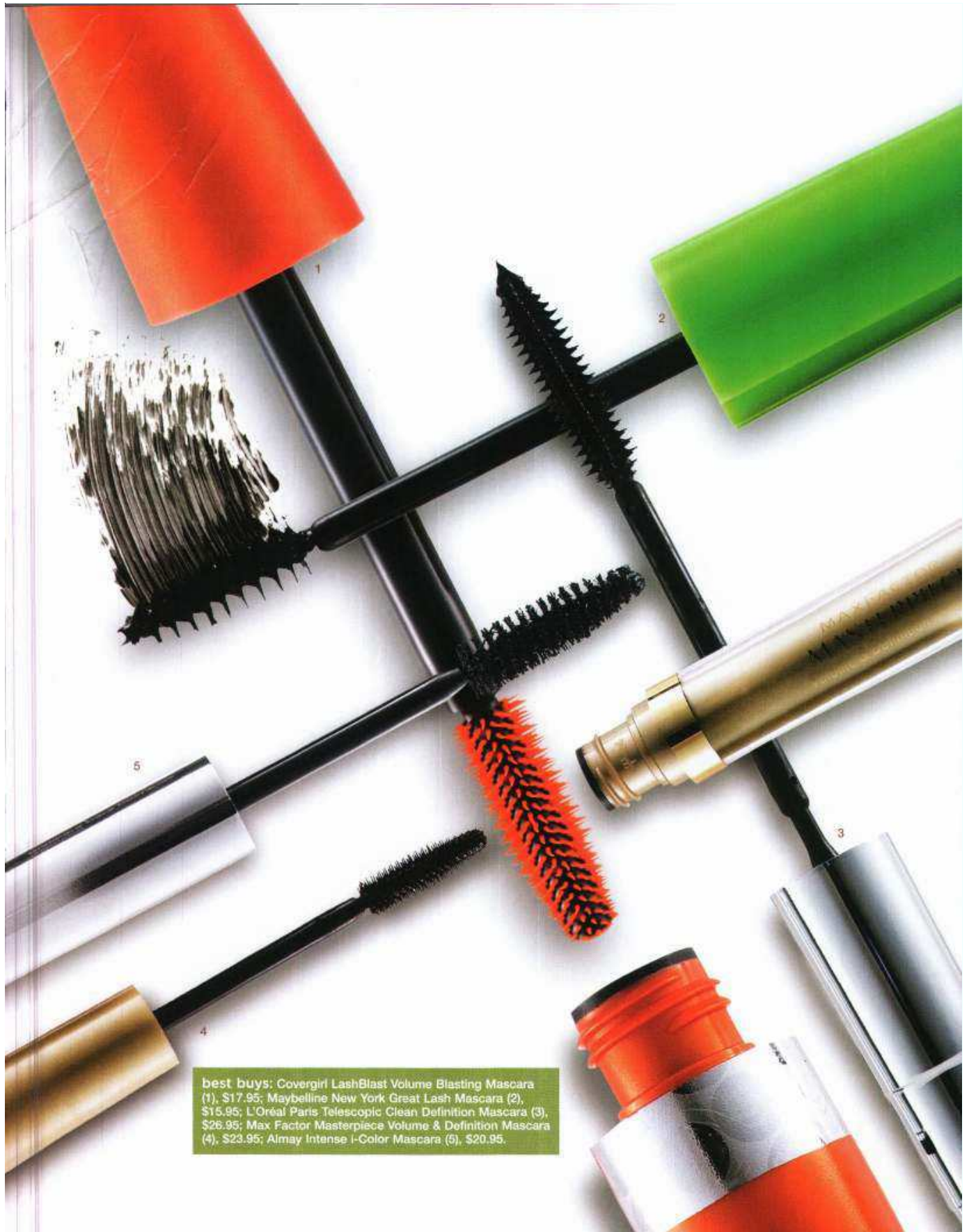
For extra shape with added hold, comb a gel through your brows upwards into the arch and then down towards the tail. Finish with a highlighter to show off your new shape. Apply it directly to the skin underneath your brows and lightly blend with your fingertip. We like **Revlon ColorStay Brow Enhancer in Blonde/Gold (4)**, \$23.95. ■

lash out

Get the most from your mascara with these insider tips...

- Always use an eyelash curler before applying any colour
- Don't forget to paint the tops of your lashes, especially if they're fair. Wait until they are completely dry before applying a second layer.
- Avoid "panda eyes" by only coating your upper lash line.
- Try not to pump the brush in and out of the tube as this traps air, causing the formula to dry out faster.
- Replace your mascara every three to six months to prevent bacterial growth.

PHOTOGRAPHED BY EDWARD URRUTIA. TEXT BY ALEX NOONAN



best buys: Covergirl LashBlast Volume Blasting Mascara (1), \$17.95; Maybelline New York Great Lash Mascara (2), \$15.95; L'Oréal Paris Telescopic Clean Definition Mascara (3), \$26.95; Max Factor Masterpiece Volume & Definition Mascara (4), \$23.95; Almay Intense I-Color Mascara (5), \$20.95.