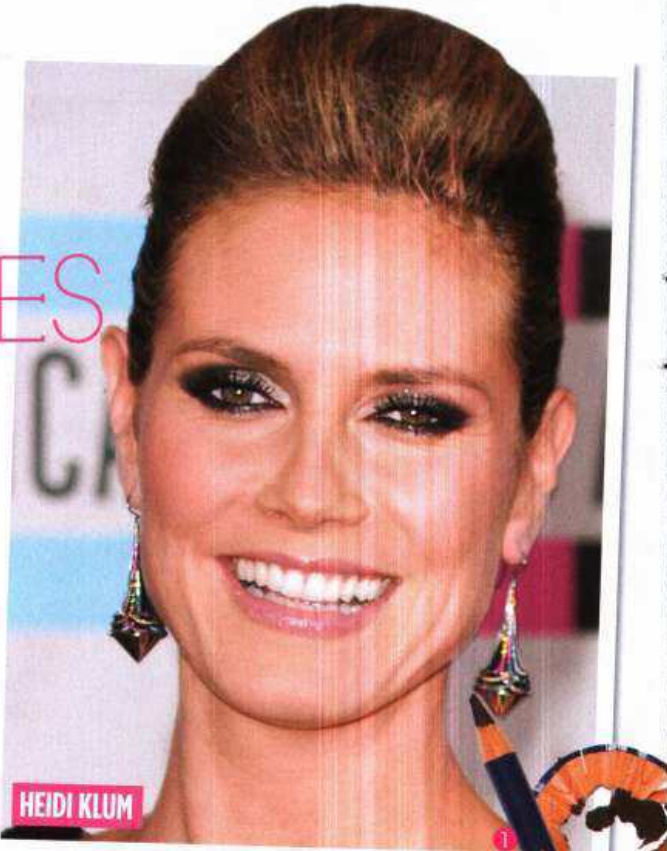




BEAUTY ADVICE

Quick tips for YOUNGER-LOOKING EYES

Look bright-eyed in an instant – no surgery required!



HEIDI KLUM

THE SEXY CAT EYE

This is a great night-time look,' says Nigel Stanislaus of Anne Hathaway's cat-eye make-up. The key is to apply a thick line to the inside of the rims of the lids to make eyes really pop.

Eyeliner will not only redefine your eyes, it can also give the illusion of thicker, more youthful lashes – like Heidi Klum's. Here, Maybelline make-up artist Nigel Stanislaus gives his top application tips.

WHICH FORMULA?

Pencil eyeliners are the easiest to use but will smudge, so Nigel suggests that you set the look with a powder shadow. Gels don't dry as fast as liquid so you have more time to blend. Both give an intense look, are long-wearing, smudge-proof and water-resistant. Powder formulas give a softer line, but they can wear off quickly and need an eyeliner brush to apply.

THE RIGHT COLOUR

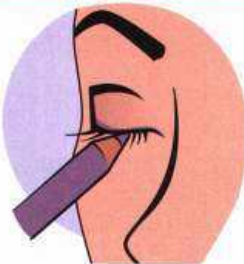
Black sapphire shades suit women with brown eyes, whereas brownish black colours are best for those with either blue or green eyes. 'Always use the sponge tip on your eyeliner as you can smudge the line for a softer finish,' Nigel advises.

ANTI-AGEING TIPS

Nigel suggests only applying liner to the upper and outer corners. And he says it's best to avoid harsh lines 'as it can drag eyes down and make them look smaller'. **NI**

- 1 Max Factor Kohl Pencil in Black, \$20.95. 2 Jane Iredale Cream to Powder Eyeliner in Black Plus, \$54. 3 Revlon Colorstay Liquid Liner in Blackest Black, \$25.95. 4 Covergirl Perfect Blend eye pencil in Smoky Taupe, \$12.95. 5 Avon Ultra Luxury Eyeliner in Black, \$14.99. 6 Maybelline Eye Studio Lasting Drama Gel Eyeliner in Black, \$16.95.

HOW TO: APPLY EYELINER LIKE A PRO



STEP 1 Hold skin of upper lid taut with a fingertip and use short strokes to apply liner from middle of the eye to the outside corner.



STEP 2 Draw a second line from the eye's inside corner so the two lines meet. The outer edge should be thicker than the inside.



STEP 3 Make sure there's no gap between the liner and lash line. Fill any space with eyeshadow in the same hue and an eyeliner brush.



By Sarah Brock-Watson. Enquiries: Avon 1800 646 000, Covergirl 1800 811 040, Jane Iredale 1300 850 000, Max Factor 1800 811 040, Maybelline 1300 369 327, Revlon 1800 405 488