



BEAUTY ADVICE

5 ways to GO NUDE

Here's how to choose the right nude lippie for you



Daytime nudes

We love Jessica Biel's natural, understated look. You don't have to do an intense smoky eye when wearing nude lipstick - just play up your brows and lashes instead,' says Rae, who counts Jess as one of her clients. 'I apply lots of black mascara and fill in the brows with a brow pencil, which gives enough definition and prevents the skin from looking washed out.'

Everyone can wear a nude lip, it's just a matter of picking the right shade. We asked Rae Morris, L'Oréal Paris international make-up artist, for her pro tips.

1 CHOOSE THE RIGHT COLOUR

'Make sure your nude lipstick is between your natural lip colour and your skin tone,' advises Rae. Pale skin suits nudes with a hint of pink and darker skin often suits a hint of berry.

2 TEST IT FIRST

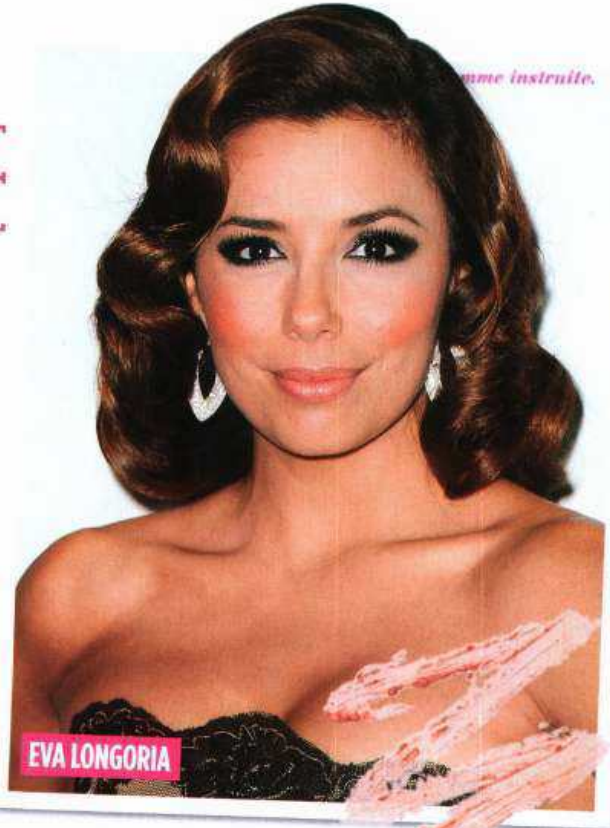
When shopping for nudes, Rae suggests trying the colour on your fingertip. She explains this is because 'it has the same blue-red tint as your lips'.

3 PICK THE RIGHT FORMULA

The delicate skin on your lips dries out as you age, so go for creamy moisturising lipsticks, 'as they will hydrate lips at the same time,' she says.

4 STAND OUT

'Always emphasise something else on your face,' advises Rae. She recommends applying your nude lip shade first, then amp up your eyes or your



EVA LONGORIA

cheeks to keep the overall look fresh and bright.

5 GET FULLER LIPS

Rae says: 'Gloss with a shimmer reflects light, giving the illusion of bigger lips.' **NI**

- 1 Avon Glazewear Lipstick in Champagne Glow, \$18.99.
- 2 Revlon Colorburst Lipstick in Rosy Nude, \$23.95.
- 3 Max Factor Vibrant Curve Effect Lip Gloss in Smart, \$20.95.
- 4 L'Oréal Paris Colour Riche Made For Me Naturals Lipcolour in Silk, \$25.95.
- 5 NP Set Lip Gloss in Island, \$22.
- 6 Rimmel Lasting Finish Lipstick in Birthday Suit, \$9.95.
- 7 Covergirl Outlast Lipcolor in Nude, \$20.95.



HOW TO: APPLY THE PERFECT LIPSTICK



STEP 1 Remove all dry and flaky skin with a lip scrub and then soften lips with a lip balm. Leave the balm on for 20 minutes before you apply your lipstick.



STEP 2 Wipe off excess lip balm with a tissue and apply your lipstick with a lip brush, starting along the top and bottom lip line before filling in the entire lip.



STEP 3 Plump up your pout by applying a nude gloss with a hint of gold shimmer to the centre of the bottom lip and just under the Cupid's bow.